

Lines should be numbered consecutively to facilitate reviewing of the manuscript.

1

## The title of the manuscript

2

Author 1<sup>a,b</sup>, Author 2<sup>a,\*</sup>, ..., Author N<sup>a,n</sup>

3

<sup>a</sup>*Affiliation 1*

Please clearly indicate the given name and family name of each author. Make sure the given name before the family name.  
Example: Bojie Fu

Concise and informative. Avoid puns/idioms, abbreviations and formulae. Capitalize the first letter of the first word instead of all words in title.

4

<sup>b</sup>*Affiliation 2*

5

...

6

<sup>n</sup>*Affiliation N*

7

Please provide the full postal address of each affiliation, including the country.  
Example: *School of Natural Resources, Faculty of Geographical Science, Beijing Normal University, Beijing 100875, China*

8

9

10 \*Corresponding author(s).

11 *E-mail address(es)*: wabc@mail.com(J. Smith), ubly@mail.com(X. Zhao).

12

Please add the institutional email of corresponding author.

13

### 14 Highlights:

- 15 ● The highlights of your manuscript are mandatory.
- 16 ● Include 3 to 5 bullet points.
- 17 ● Maximum 85 characters, including spaces, per bullet point.

18

### 19 Graphical Abstract

- 20 ● To draw more attention, the graphical abstract should be included.
- 21 ● The graphical abstract should reflect the work flow and the main results of the text.  
22 It cannot be a figure from the text.
- 23 ● It should be submitted as a separate file in the online submission system.
- 24 ● Image size: minimum of 531×1328 pixels (h × w).
- 25 ● The image should be readable at a size of 5 cm × 13 cm using a screen resolution  
26 of 96 dpi.
- 27 ● Preferred file types: TIFF, EPS, PDF or MS Office files. **If a map is included,**  
28 **provide the TIFF file, please.**

29 **Abstract:** Abstract text.

30 A concise and factual abstract of up to 250 words is required. It should state briefly the purpose  
 31 of the research, the principal results and major conclusions and work implications. An abstract  
 32 is often presented separately from the article, so it must be able to stand alone. For this reason,  
 33 references should be avoided, but if essential, then cite the author(s) and year(s). Non-standard  
 34 or uncommon abbreviations should be avoided, but if essential they must be defined at their  
 first mention in the abstract itself.

35 **Keywords:** Keyword 1; Keyword 2; Keyword 3; ...; Keyword N

36 Provide a maximum of 6 keywords separated by semicolon, with the  
 37 first word capitalized.  
 38  
 39

40 **Main body**

- 41 ● Divide your article into clearly defined and numbered sections. Subsections  
 42 should also be numbered may be given brief headings.
- 43 ● Should be arranged in sequence: Introduction, Materials and Methods, Results,  
 44 Discussion, Conclusions, Acknowledgments and References.

45 **1. Introduction**

46 Clearly state the novelty and objectives of the manuscript. Provide an adequate  
 47 background, but avoid a detailed literature review.

48 **2. Materials and methods**

No space between sections and sub-  
 sections should be included.

49 Provide sufficient details to allow the work to be reproduced by other researchers.  
 50 Methods that have previously been published should be summarized and indicated  
 51 with appropriate references. If quoting directly use quotation marks and cite the  
 52 source. Any modifications to previously published methods should be described.

53 ***Math formulae/equations***

- 54 ● If appropriate, please submit math equations as editable text as opposed to images.
- 55 ● Present simple formulae in line with normal text and use a slash (/) instead of a  
 56 horizontal line for fractional terms, e.g.,  $X/Y$ .
- 57 ● Consecutively number any equations that have to be displayed separately from the  
 58 text.

- 59 ● In principle, use *italics* for the variable symbol (single letter) throughout the paper.  
 60 However, **please Do Not use italics for words or acronyms of several letters.** A  
 61 space should be added between the number and its unit.

62 Example:

$$Y_{xj} = P_x - AET_{xj} = \left(1 - \frac{AET_{xj}}{P_x}\right) \times P_x$$

AET do not use italics.

Equations should be numbered as (1), (2), etc.

(1)

64 where:

- 65  $Y_{xj}$  refers to the WY of the  $x$  grid of the  $j$  class of land use type;  
 66  $P_x$  refers to the actual annual precipitation of the  $x$  grid; and  
 67  $AET_{xj}$  refers to the actual evapotranspiration of the  $x$  grid of the  $j$  class land use  
 68 type.

69

### 70 **3. Results**

#### 71 *3.1. A brief heading*

##### 72 *3.1.1. A brief heading*

##### 73 *3.1.2. A brief heading*

#### 74 *3.2. A brief heading*

##### 75 *3.2.1. A brief heading*

##### 76 *3.2.2. A brief heading*

77 ...

### 78 ***Figures and captions***

- 79 ● Figures and words in the figures should be clear and correct. Words in the figures  
 80 should use the Arial font.
- 81 ● Figures should have a minimum resolution of 300 dpi (dots per inch).
- 82 ● Figures can be placed either next to the relevant text in the article or on separate  
 83 page(s) at the end of the manuscript.
- 84 ● Save all figures in **Tiff** format and number them sequentially as Fig. 1; Fig. 2; etc.
- 85 ● Use **(a), (b), (c)**, etc. for different parts of figures.
- 86 ● Ensure that each figure has a caption. A caption should provide a brief title (not  
 87 on the figure itself) and description. Keep the text in figure to a minimum, but  
 88 explain all symbols and abbreviations.

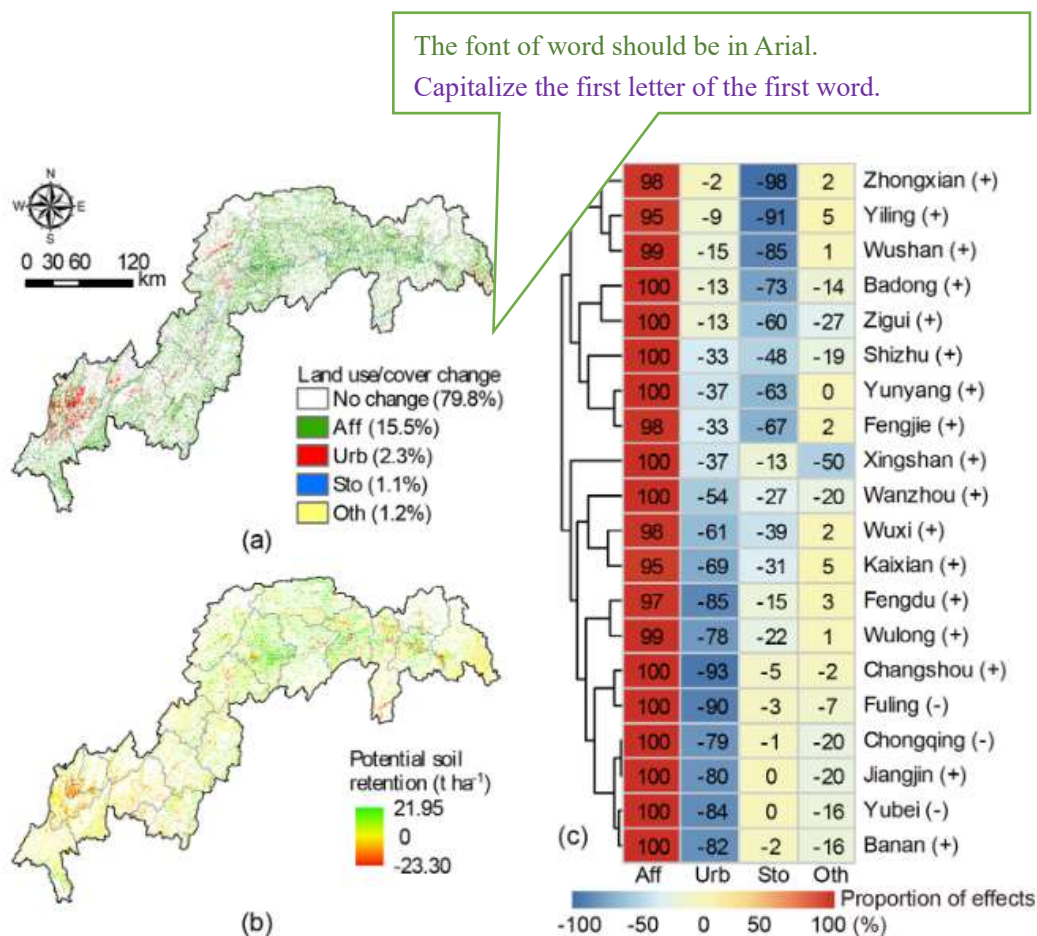
89

Results should be clear and concise.

90 Example: (Source from Liu et al., 2020)

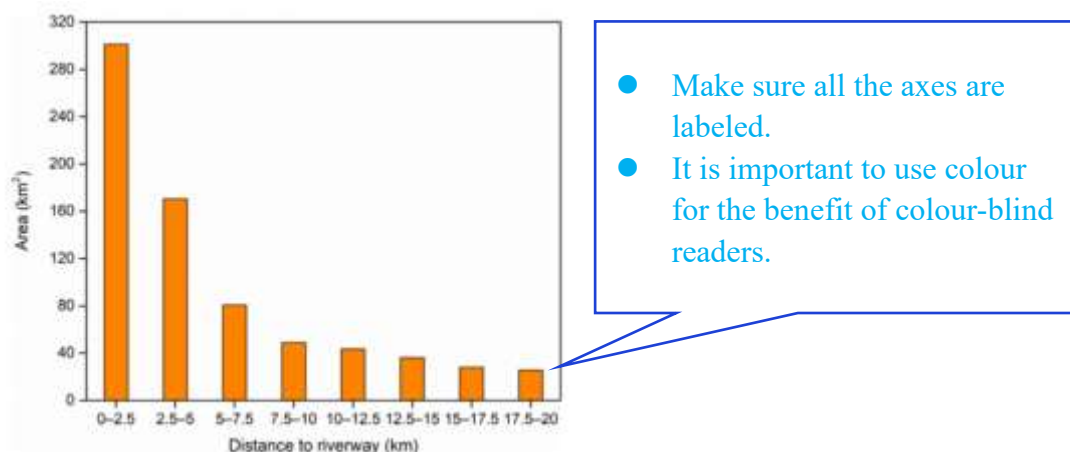
91

92



93

94 **Fig. 1.** Spatial explicit LULC changes (a), potential soil retention service (b), and  
 95 hierarchical cluster analysis (complete linkage) of 20 counties based on the proportion  
 96 of effects on potential soil retention (c) of TGR area. Note: Aff, afforestation; Urb,  
 97 urbanization; Sto, storing water; Oth, other land use/cover changes. The figure (a) was  
 98 derived from LULC maps in 2001 and 2015. We estimated the potential soil loss rate  
 99 of 2015 through the land use/cover map of 2015 and the rainfall of 2001 (Scenario I),  
 100 then combined the actual soil loss rate of 2001 to generate the figure (b) . In figure  
 101 (c) , the relative contributions were calculated using Eq. (11) , and the negative sign in  
 102 front of the number indicates that the corresponding LULC change type would  
 103 exacerbate soil loss. The positive or negative sign after the name of the county  
 104 indicates that the overall effect of all LULC changes between 2001 and 2015 has a  
 105 positive or negative impact on soil retention service in this county.



106

107 **Fig. 2.** Sandy land area distribution by river buffer zones for the middle part of the  
 108 YZRB in 2019.

109 **Tables and table captions**

- 110 ● Please submit tables as editable text, not as images.
- 111 ● Tables should be presented as three-line tables.
- 112 ● Tables can be placed either next to the relevant text in the article, or on separate  
 113 page(s) at the end of the manuscript.
- 114 ● Number tables consecutively coinciding with their appearance in the text and place  
 115 any table notes below the table body.
- 116 ● Ensure that each illustration has a caption and be numbered sequentially as Table  
 117 1; Table 2; etc.

118

119 Examples:

120

121 **Table 1**

122 Ecosystem service value per unit area of terrestrial ecosystem.

| Ecosystem     | Farmland | Forest     | Grassland | Wetland    | Construction land | Desert   |
|---------------|----------|------------|-----------|------------|-------------------|----------|
| ESV (yuan/ha) | 8,019.86 | 113,943.95 | 26,247.67 | 209,853.86 | 1,403.17          | 6,670.36 |

123 *Note:* The ecological services in this study mainly include raw material production, water supply,  
 124 gas regulation, climate regulation, environmental purification, hydrological regulation, soil  
 125 conservation, maintenance of nutrient cycling, biodiversity, aesthetic landscape. Because grain  
 126 production function was calculated separately, the ecosystem service value in this table did not  
 127 include food production.

128

129

130

131 **Table 2**

132 Information of the selected features.

| Feature variations      | Variation name                         | Shortened name | Description   |
|-------------------------|--|----------------|---|
| Spectral features       | Band mean                              |                | The mean reflectivity of all pixels in the image object of each band                    |
| Spatial features        | Area                                   | A              | The number of pixels that make up an image object                                       |
|                         | Length/Width                           | LW             | The length-width ratio of the smallest rectangle surrounding the image object           |
|                         | Shape index                            | SI             | The ratio that the perimeter divided by square root of 4 times area of the image object |
|                         | Mean difference to neighbors           |                | The mean difference of the reflectivity to neighbors of each band                       |
| Thematic index features | Normalized difference vegetation index | NDVI           | $NDVI = \frac{P_{NIR} - P_{RED}}{P_{NIR} + P_{RED}}$                                    |
|                         | Normalized difference water index      | NDWI           | $NDWI = \frac{P_{GREEN} - P_{NIR}}{P_{GREEN} + P_{NIR}}$                                |
|                         | Normalized difference snow index       | NDSI           | $NDSI = \frac{P_{GREEN} - P_{SWIR}}{P_{GREEN} + P_{SWIR}}$                              |

133 *Note:*  $P_{NIR}$ ,  $P_{RED}$ ,  $P_{GREEN}$ ,  $P_{SWIR}$  represents near-infrared, red, green and short-wave near infrared  
 134 band image.

135

136 **Table 3**

137 Results of OLS model and GWR model.

| Model parameter | OLS model | GWR model |
|-----------------|-----------|-----------|
| AICc            | 90,871.31 | 86,146.59 |
| Sigma           | 2.24      | 1.34      |
| $R^2$           | 0.88      | 0.96      |
| Adjusted $R^2$  | 0.88      | 0.96      |

138

139 **4. Discussion**

140 This should explore the significance of the research results, but do not repeat them  
 141 here. Avoid extensive citations and discussion of published literature.

142 **5. Conclusions**

143 The main conclusions of the research may be presented in a short Conclusions  
 144 section, which should stand alone.

145

146 **Declaration of Competing Interests**

147 All authors must disclose any financial and personal relationships with other people or  
148 organizations that could inappropriately influence (bias) their work.

149 **Example:** The author declares that there are no known competing financial  
150 interests or personal relationships that influenced the work reported in this paper.  
151

152 **Acknowledgements (Optional)**

153 Acknowledgements should be included in a separate section.

154 Please add “Grant No.” before the Program  
(Fund) number.

155 **References**

- 156 ● References should be arranged alphabetically and if necessary sorted  
157 chronologically.
- 158 ● Unpublished results and personal communications are not recommended in the  
159 reference list but can be mentioned in the text.
- 160 ● More than one reference from the same author(s) in the same year must be  
161 identified by the letters “a”, “b”, “c”, etc., placed after the year of publication.

162 *Examples:*

Example: 2021a

163 ***Reference to a journal publication with page numbers:***

164 Ren, W., Banger, K., Tao, B., Yang, J., Huang, Y., Tian H., 2020. Global pattern and  
165 change of cropland soil organic carbon during 1901–2010: Roles of climate,  
166 atmospheric chemistry, land use and management. *Geogr. Sustain.* 1(1), 59–69.

167 Journal names should be abbreviated according to the List of  
168 Title Word Abbreviations. In the title of a journal, the first letter  
169 of each word should be capitalized.  
170  
171

172 ***Reference to journal publication with an article number:***

173 Mekonnen, M., Hoekstra, A., 2016. Four billion people facing severe water scarcity -  
174 Supplementary. *Sci. Adv.* 2 (2), e1500323.

175 ***Reference to a paper in press with DOI:***

176 He, C., Harden, C., Liu, Y., 2020. Comparison of water resources management  
177 between China and the United States. *Geogr. Sustain.*  
178 <https://doi.org/10.1016/j.geosus.2020.04.002>.  
179

180

181 **Reference to a book:**

182 Strunk, J., and White, E., 2000. *The Elements of Style*, fourth ed. Longman, New  
183 York.

184

185 **Reference to a chapter in an edited book:**

186 Grunwald, S., Mizuta, K., Ceddia, M.B., Pinheiro, E.F.M., Wilcox, R.K.K., Gavilan,  
187 C.P., Ross, C.W., Clingensmith, C.M., 2017. The meta soil model: an integrative  
188 multi-model framework for soil security. In: Field, D., Morgan, C., McBratney,  
189 A. (Eds.), *Global Soil Security*. Progress in Soil Science Series. Springer,  
190 Rotterdam, pp. 305–317.

191

192 **Reference to a paper in a conference proceeding:**

193 Van Achteren, T., Dierckx, W., Sterckx, S., Livens, S., Saint, G., 2012. Proba-V, a  
194 SPOT-VGT Successor Mission, Product Definition and Specifications. In:  
195 Perakis, K., and Moysiadis, A. (Eds.), *32nd EARSEL Symposium Proceedings-*  
196 *Advances in Geosciences*, Mykonos Island, pp. 281–304.

197

198 **Reference to a thesis or dissertation:**

199 Amory, J., 1996. *Permian sedimentation and tectonics of southern Mongolia*. M.S.  
200 thesis, Stanford University, Stanford.

201

202 **Reference to a report:**

203 United Nations, 2015. *Transforming our world: The 2030 Agenda for sustainable*  
204 *development*. United Nations General Assembly, New York.

205

206 **Reference to a website:**

207 Cancer Research UK, 2003. *Cancer statistics reports for the UK*.  
208 <http://www.cancerresearchuk.org/aboutcancer/statistics/cancerstatsreport/>  
209 (accessed 13 March 2003).

210

211 **Reference to a dataset:**

212 [dataset] Oguro, M., Imahiro, S., Saito, S., Nakashizuka, T., 2015. Mortality data for  
213 Japanese oak wilt disease and surrounding forest compositions, Mendeley Data,  
214 v1. <https://doi.org/10.17632/xwj98nb39r.1>.  
215 [dataset] Global Soil Data Task, 2014. *Global soil data products CD-ROM contents*  
216 *(IGBP-DIS)*. Oak Ridge National Laboratory Distributed Active Archive Center,  
217 Oak Ridge, TN. <http://doi.org/10.3334/ORNLDAAC/565>.

218

219 **Reference to a non-English reference:**

220 Wang, H., Zhao, S., Zhang, J., Ji, J., 2011. Features of runoff changes in the Yellow  
221 River from 1950 to 2010. *Yellow River* 33, 16–18. (in Chinese)

222

223

Please write en dash (–) instead of  
hyphen between page numbers.

The “in” should not be capitalized.



224 **Citation in text:**

- 225 ● Please ensure that every reference cited in the text is also present in the reference  
226 list (and vice versa).
- 227 ● Groups of references should be first listed chronologically, then alphabetically.
- 228 ● The format of the citation is as following:
  - 229 ○ **Single author:** the author's name (without initials, unless there is ambiguity)  
230 and the year of publication;
  - 231 ○ **Two authors:** both authors' names separated by "and", followed by the year of  
232 publication;
  - 233 ○ **Three or more authors:** first author's name followed by "et al." and the year  
234 of publication.
- 235 ● More than one reference from the same author(s) in the same year must be  
236 identified by the letters "a", "b", "c", etc., placed after the year of publication.

237

238 Examples:

239 "as demonstrated (Allan and Jones, 1995; Allan, 1996a, 1996b, 1999; Liu et al.,  
240 2021). Kramer et al. (2000) have recently shown ..

241

242

"et al." should not use italics.

Two citations should be separated by semicolons.

243 **Supplementary material (Optional)**

- 244 ● Please submit your supplementary material as a separate file along with the  
245 article.
- 246 ● Submitted supplementary items are published exactly as they are received.
- 247 ● Formulae and equations in supplementary material should be presented as: Eq.  
248 (S1), Eq. (S2), etc.
- 249 ● Similarly, for tables and figures: Table S1; Fig. S1, etc.

250